

TRUTH SPOTLIGHT

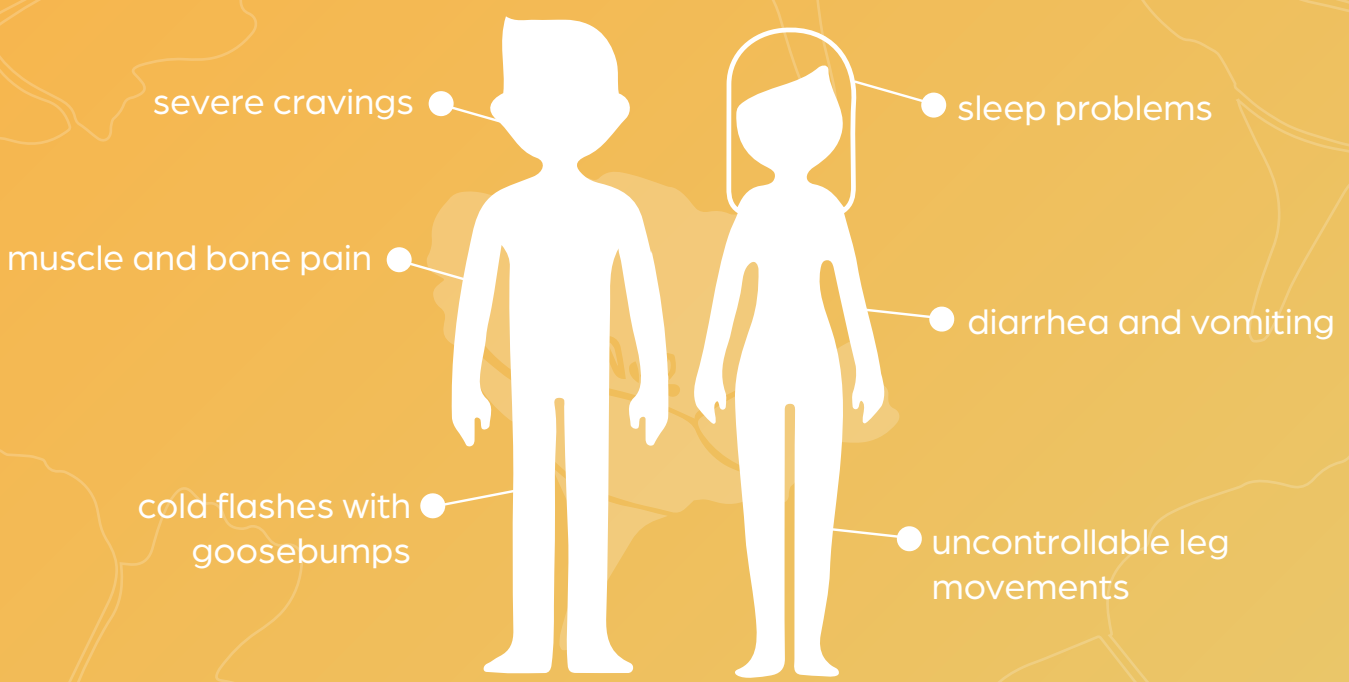
on opiate addiction

PRESCRIPTION DRUGS AND ADDICTION

Repeated misuse of prescription opioids can lead to a substance use disorder (SUD), a medical illness that ranges from mild to severe and temporary to chronic. Addiction is the most severe form of SUD. A SUD develops when continued misuse of the drug changes the brain and causes health problems and failure to meet responsibilities at work, school, or home.

People addicted to an opioid medication who stop using the drug can have severe withdrawal symptoms that begin as early as a few hours after the last dose.

Withdrawal symptoms include:



WHO CAN BECOME ADDICTED?

Not one factor can predict if a person will become addicted to drugs; however, a combination of factors influences the risk for addiction. The more risk factors a person has, the greater the chance that taking drugs can lead to addiction.

Common Risk Factors

- Biology
- Environment
- Development

TAKING PRESCRIPTION MEDICATION?

Proper medication management and disposal can help prevent prescription misuse.

- Turn in your unused or old prescriptions, new or used syringes, or over-the-counter medications for safe disposal at any of the locations listed below during business hours.
- Talk with your youth about the risks of misusing medications.

For additional drop off locations or help starting the conversation with your youth, visit TalkSooner.org.

MEDICATION DROP-OFF LOCATIONS

Public Office Drop-off

- Coopersville City Hall
- Grand Haven Charter Township Hall
- Grand Haven Police Department
- GVSU Department of Public Safety
- Holland Department of Public Health
- Holland Police Department
- Hudsonville City Hall
- Ottawa County Sheriff
- Spring Lake: Ottawa County Sheriff
- Zeeland Police Department

Pharmacy Drop-off

- CVS-Holland (Lakewood and River)
- Family Fare-Wyoming
- Meijer (locations throughout the county)
- Walgreens-Holland (Butternut)

Hours vary by location.

For more information about each of these locations, visit www.miottawa.org/substanceuse